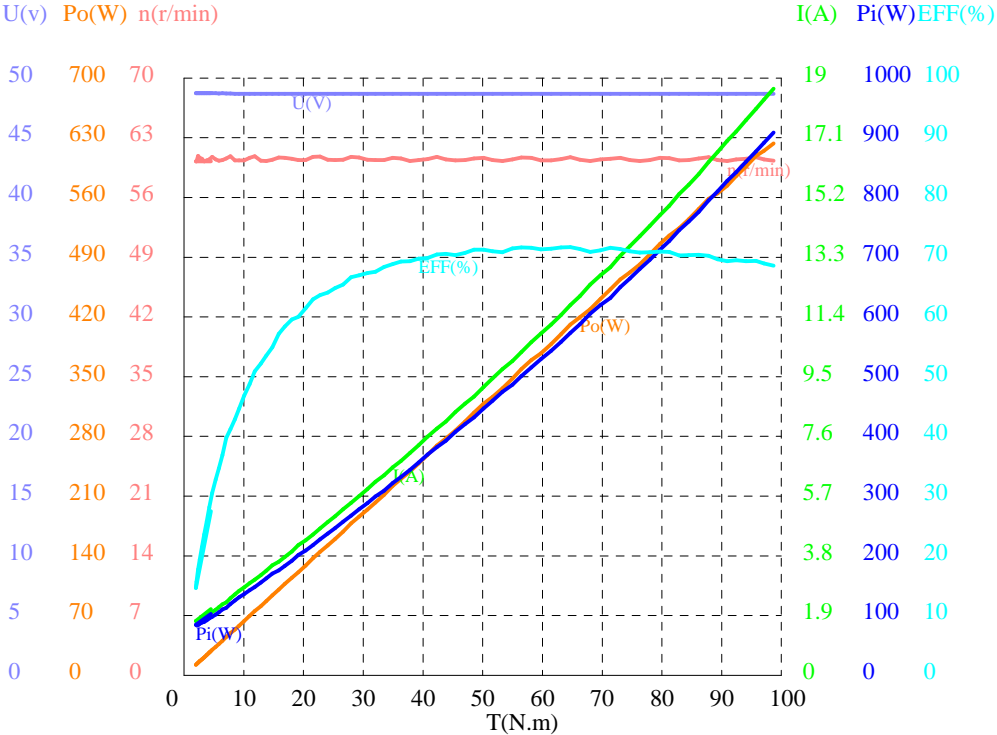


# 测试报告

试品名称：直流无刷电机  
试品型号：BLDC-500W  
环境温度：26.0℃ - 25.5℃  
报告编号：20230314110524

生产厂家：佛山斗索科技有限公司  
其它信息：。  
使用仪器：磁粉测功机MPD-1000KB/F  
电源参数：49V

样机编号：1#  
电机转向：顺时针（CW）  
测试人员：莫极勤  
审核人员：杨勇



特征点	n(r/min)	T(N.m)	Po(W)	U(V)	I(A)	Pi(W)	EFF
空载点	60.249	4.4831	28.283	48.727	2.1106	102.84	27.50%
最大效率	60.715	64.656	411.06	48.681	11.778	573.37	71.69%
最大输出	60.327	98.700	623.49	48.686	18.664	908.69	68.61%
最大转矩	60.327	98.700	623.49	48.686	18.664	908.69	68.61%
堵转点							
额定点1							
额定点2							
额定点3							
额定点4							
额定点5							

NO.	n(r/min)	T(N.m)	Po(W)	U(V)	I(A)	Pi(W)	EFF
1	60.249	4.4831	28.283	48.727	2.1106	102.84	27.50%
2	60.249	2.0861	13.161	48.732	1.7240	84.015	15.66%
3	60.662	2.6248	16.673	48.731	1.7698	86.244	19.33%
4	60.248	3.3509	21.140	48.731	1.8414	89.732	23.56%
5	60.469	4.2407	26.852	48.728	1.9572	95.373	28.15%
6	60.452	5.2750	33.391	48.728	2.0892	101.80	32.80%
7	60.392	6.4356	40.697	48.725	2.2657	110.40	36.86%
8	60.866	7.7446	49.360	48.710	2.4583	119.74	41.22%
9	60.342	9.2364	58.360	48.687	2.6848	130.71	44.65%
10	60.668	10.967	69.667	48.687	2.9327	142.78	48.79%
11	60.319	12.829	81.028	48.687	3.1887	155.25	52.19%
12	60.423	14.788	93.565	48.687	3.5006	170.44	54.90%
13	60.649	16.881	107.21	48.687	3.7683	183.47	58.43%
14	60.372	19.142	121.01	48.687	4.1431	201.71	59.99%
15	60.753	21.589	137.34	48.687	4.4804	218.14	62.96%
16	60.439	24.057	152.25	48.687	4.8801	237.60	64.08%
17	60.429	26.601	168.32	48.687	5.2841	257.26	65.43%
18	60.685	29.303	186.20	48.688	5.7074	277.88	67.01%
19	60.395	32.019	202.49	48.687	6.1542	299.63	67.58%
20	60.668	34.925	221.86	48.687	6.6161	322.12	68.88%
21	60.279	37.835	238.81	48.688	7.0723	344.34	69.35%
22	60.512	40.781	258.40	48.687	7.5978	369.91	69.85%
23	60.466	43.823	277.47	48.687	8.0717	392.98	70.61%
24	60.410	47.051	297.63	48.686	8.6452	420.90	70.71%
25	60.651	50.147	318.48	48.687	9.1759	446.74	71.29%
26	60.263	53.308	336.39	48.687	9.7481	474.61	70.88%
27	60.688	56.472	358.86	48.686	10.289	500.92	71.64%
28	60.355	59.727	377.47	48.687	10.873	529.35	71.31%
29	60.498	63.112	399.80	48.687	11.466	558.23	71.62%
30	60.439	66.307	419.63	48.686	12.070	587.65	71.41%
31	60.448	69.694	441.14	48.686	12.731	619.83	71.17%
32	60.676	73.032	464.01	48.688	13.348	649.87	71.40%
33	60.305	76.286	481.72	48.685	13.974	680.32	70.81%
34	60.641	79.652	505.78	48.685	14.640	712.75	70.96%
35	60.359	82.917	524.06	48.686	15.315	745.60	70.29%
36	60.569	86.177	546.56	48.686	15.942	776.14	70.42%
37	60.396	89.305	564.78	48.688	16.645	810.42	69.69%
38	60.447	92.438	585.09	48.687	17.297	842.12	69.48%
39	60.729	95.739	608.81	48.686	18.020	877.30	69.40%
40	60.327	98.700	623.49	48.686	18.664	908.69	68.61%

备注	2023. 3. 14号装500W（1#电机1:50）
----	-----------------------------